



DESIGN PORTFOLIO

InnekeSmit

[inneke@innekesmit.com](mailto:inneke@innekesmit.com)

61+ 403040501





STUDIO SET CONCEPT - PUB/CHURCH  
MA TV DRAMA  
SET DESIGNER INNEKE SMIT

**Purgatory**

### Set Design

Purgatory is a 4 episode TV drama series set between haven and hell. The design aesthetic was apocalyptic, decay and old world feeling. The textures and light aimed to evoke sense of uncormfort, not being able to rest.

*Purgatory*

Inneke**Smit**

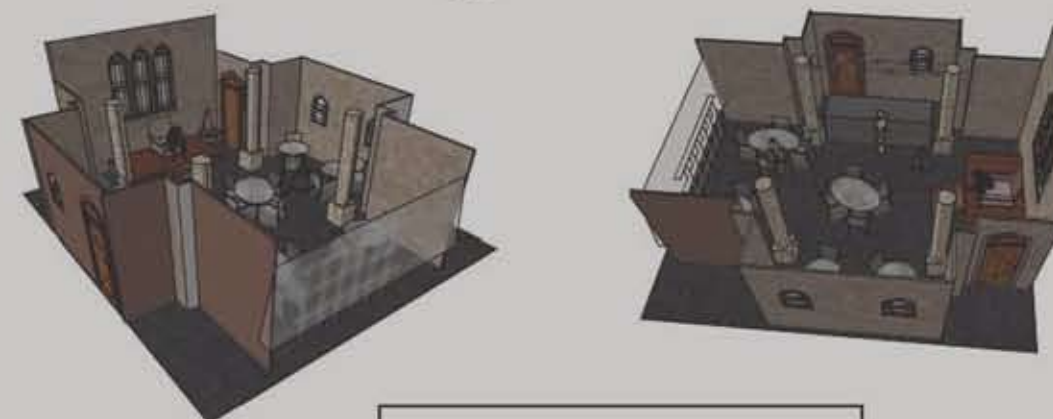
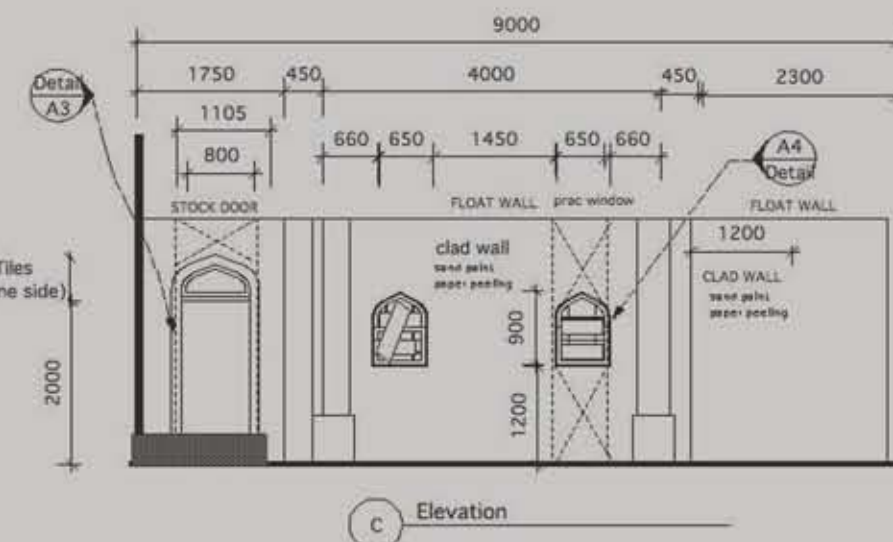
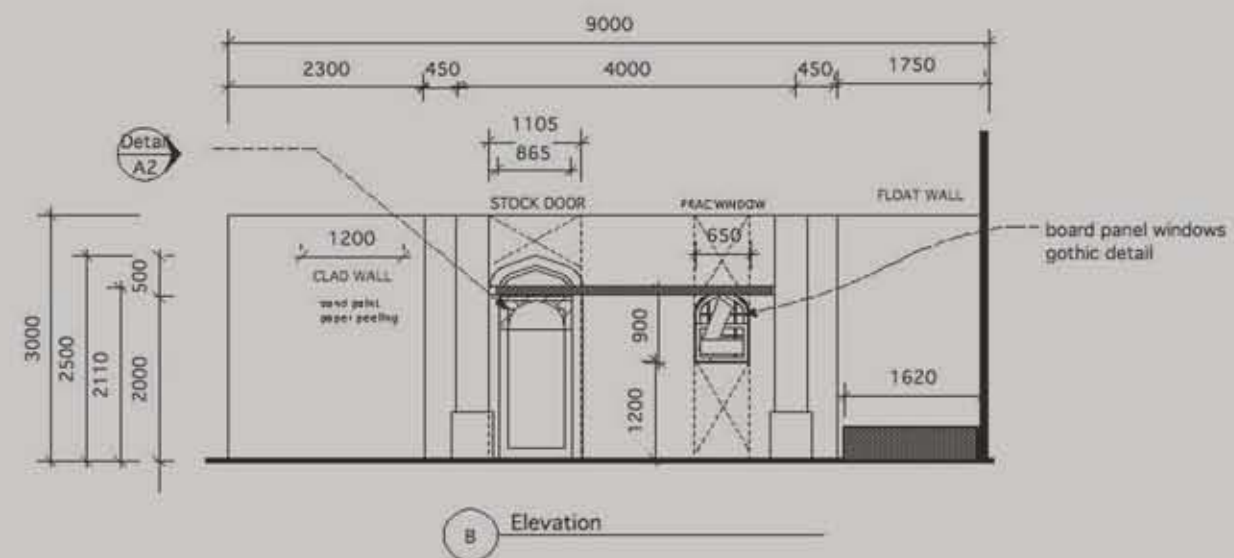
inneke.smit@hotmail.com  
0403040501





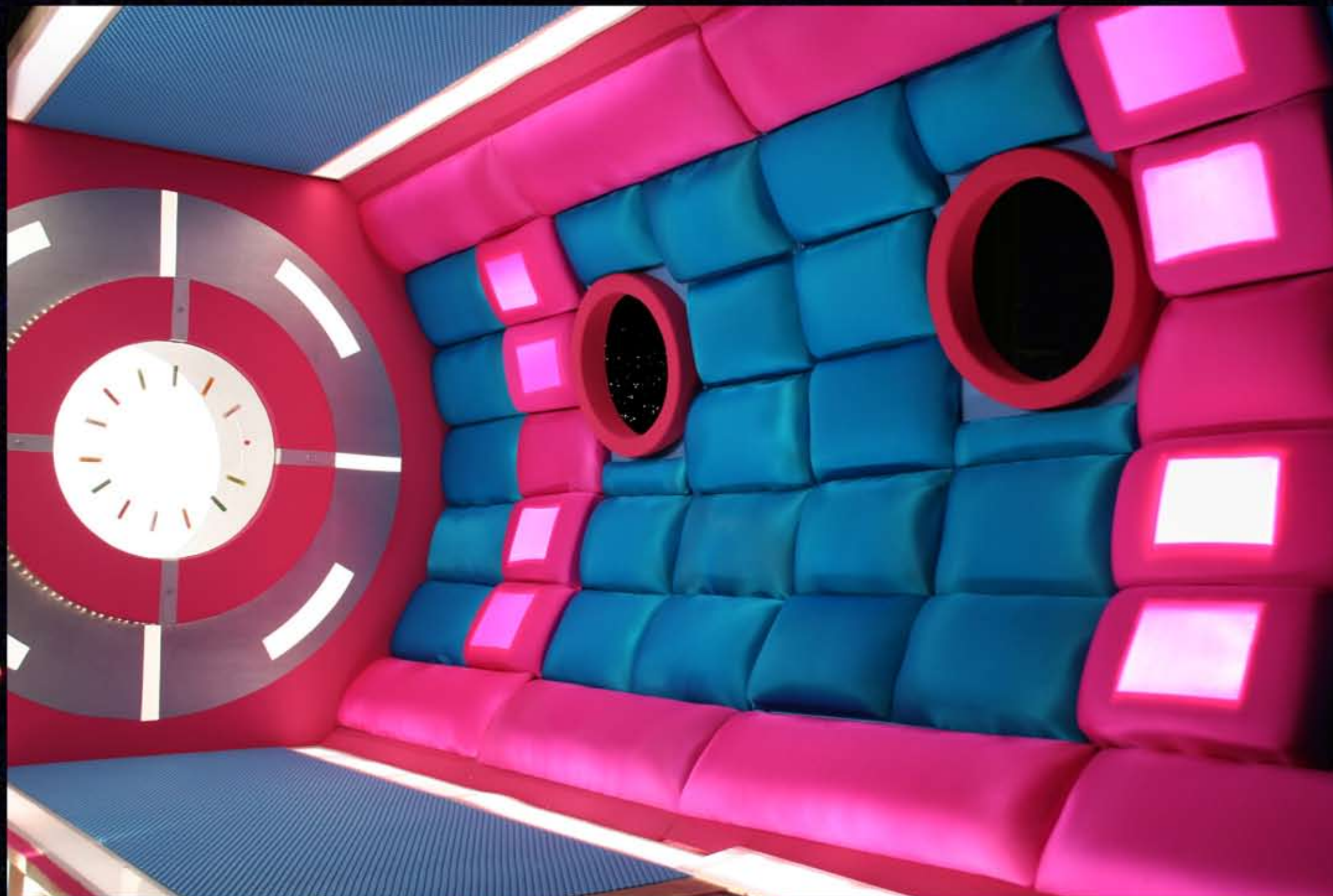






Production: AFTRS MA TV **purgatory**  
 Studio 1: PUB/CHURCH "The Spilt Milk"  
 Set Designer: INNEKE SMIT  
 Scale: 1:50  
 Date: 2/8/07 Page 1 version 2





SET BUILD - FUSELAGE

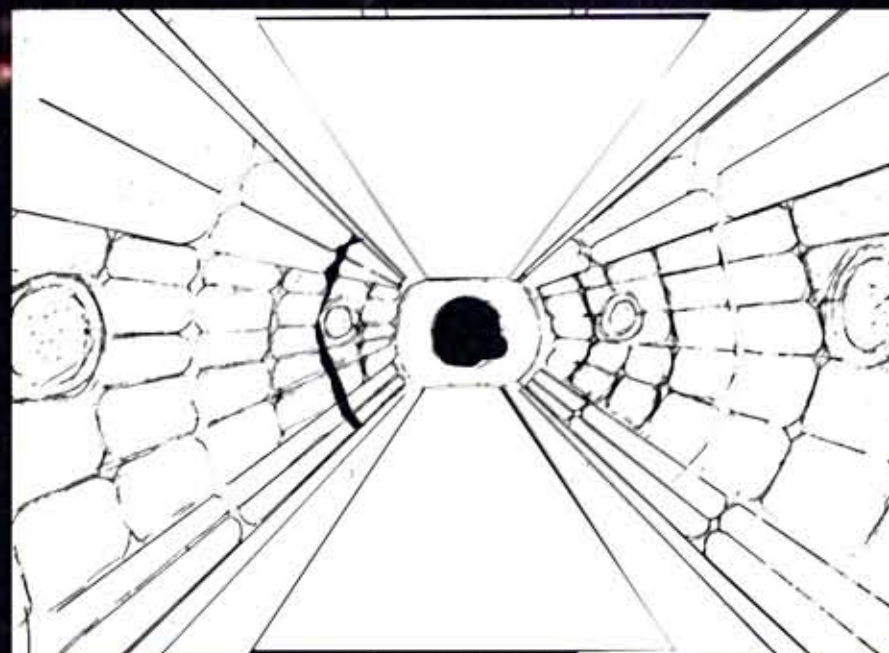






CONSTRUCTION

## MINIATURE BUILD - FUSELAGE



CONCEPT SKETCH



STUDIO SET UP

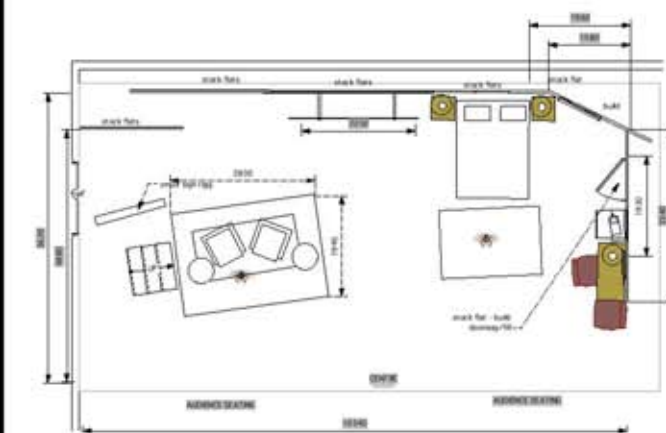


MINIATURE IN STUDIO

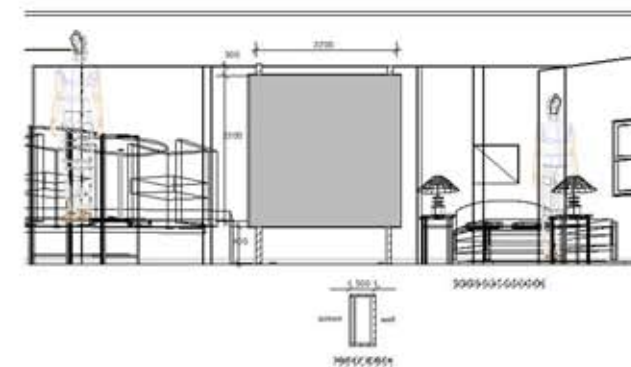
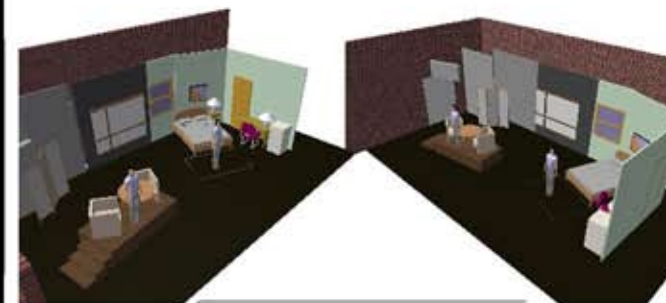


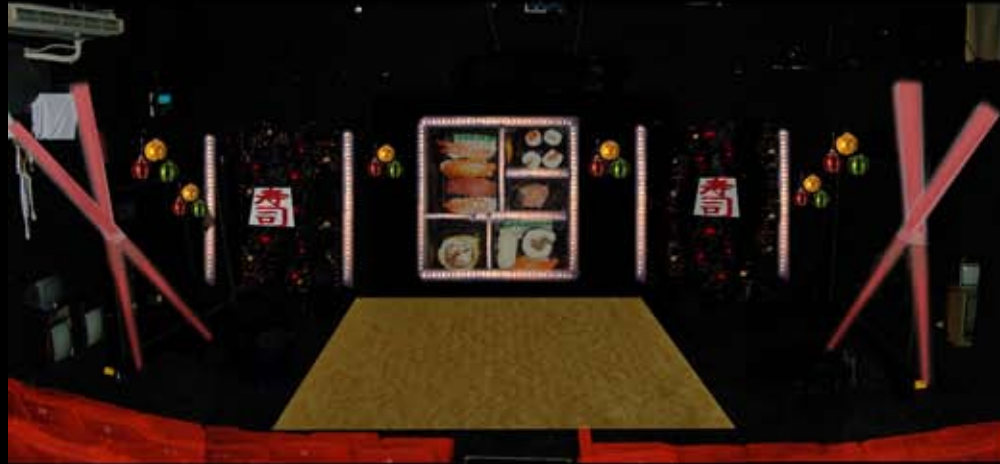
FINAL RESULT - ON SET





SHOE HORN SONATA 2010 - FLOOR PLAN  
4/12/08





XMAS SUSHI DESIGN CONCEPT  
Newtown Theatre 2008  
By Inneke Smit



TITLE: SET DESIGN

**THEATRE**

XMAS SUSHI 2008





**TITLE: DESIGNER/ART DIRECTOR**

**DEADLY WOMEN (SERIES 4 )**

Beyond Productions, Discovery Network





**TITLE: DESIGNER/ART DIRECTOR**  
**DEADLY WOMEN (SERIES 2 & 3)**  
 Beyond Productions, Discovery Network







**TITLE: PRODUCTION DESIGNER**

**OSTIA: LA NOTTE FINALE**

AFTRS Production 2009

**DIRECTOR: CRAIG BOREHAM**







**TITLE: PRODUCTION DESIGNER**  
**MUSIC VIDEO : DARINE HADCHITI**  
**SSS PRODUCTIONS**



**TITLE: PRODUCTION DESIGNER**  
**TVC: DEALS DIRECT CHRISTMAS**  
**Advertising Advantage**





**TITLE: PRODUCTION DESIGNER**

**The Years That Made US (TV Series)**

**Beyond Screen Productions,, ABC Television**





**TITLE: DESIGNER/ART DIRECTOR**

**Deadly Women (Series 7)**

**Beyond Productions, Discovery Network**





**TITLE: DESIGNER/ART DIRECTOR**  
**Behind Mansion Walls (Series 3)**  
**Beyond Productions, Discovery Network**





**TITLE: PRODUCTION DESIGNER**

**Kettle (mini-feature)**

**Innovation Films, Sydney**





**TITLE: DESIGNER/ART DIRECTOR**  
**Dark Temptations (Series 1)**  
**Beyond Productions, Discovery Network**





**TITLE: DESIGNER/ART DIRECTOR**

**Dark Minds (Series 2)**

**Beyond Productions, Discovery Network**



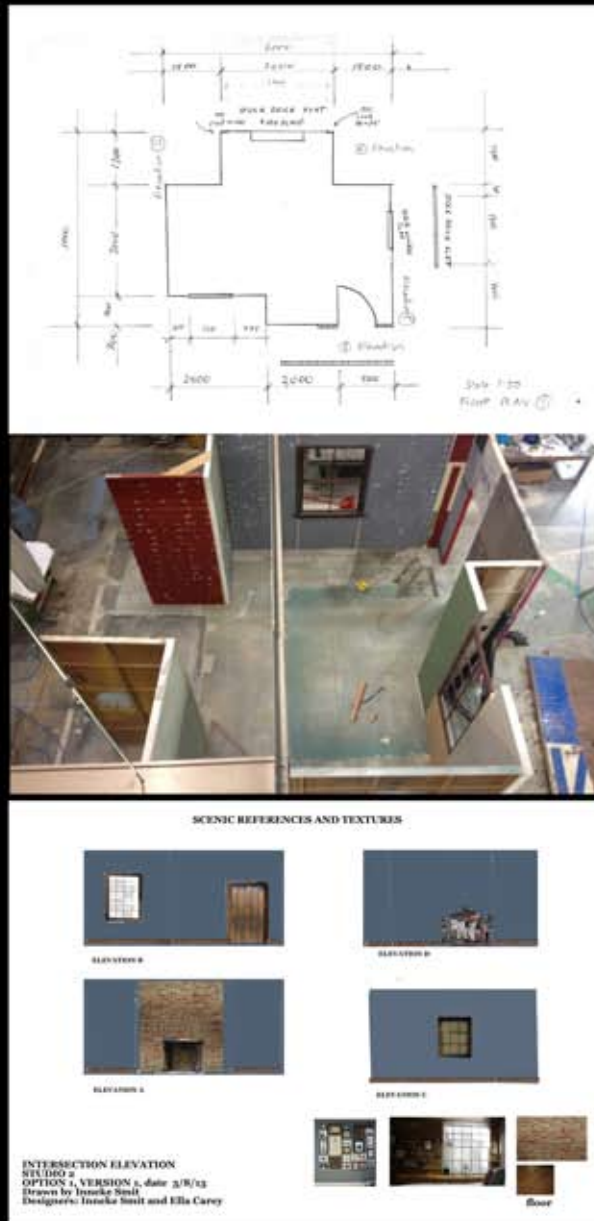


**TITLE: DESIGNER/ART DIRECTOR**

**Dark Minds (Series 3)**

**Beyond Productions, Discovery Network**





Set Stills



# **TITLE: CO-PRODUCTION DESIGNER** **Intersection (Short Doco)**

**AFTRS (Australian Film, Television & Radio School**

**(Co-designed with Ella Carey)**





**TITLE: DESIGNER/ART DIRECTOR**

**Deadly Women 1hr Special "Lizzie Borden"**

**Beyond Productions, Discovery Network**



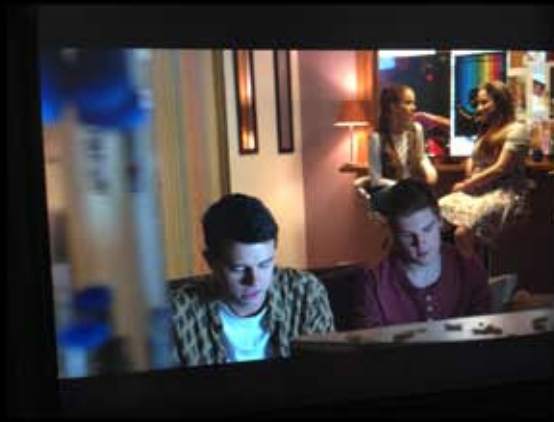


**TITLE: DESIGNER/ART DIRECTOR**

**Deadly Women (Series 8)**

**Beyond Productions, Discovery Network**





**TITLE: DESIGNER/ART DIRECTOR**  
**Deadly Women (Series 8) - production stills**



Location still



Set Build

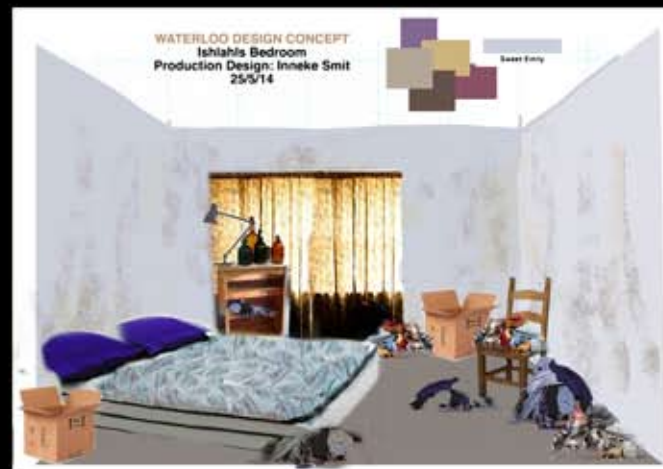


Pyrotechnic effects



**TITLE: DESIGNER/ART DIRECTOR**  
**Deadly Women (Series 8) - Special effect set builds**





**TITLE: PRODUCTION DESIGNER**

**Waterloo (Feature Film) -  
Pre Production/Concept Designs**

**Breathe Films, Sydney**